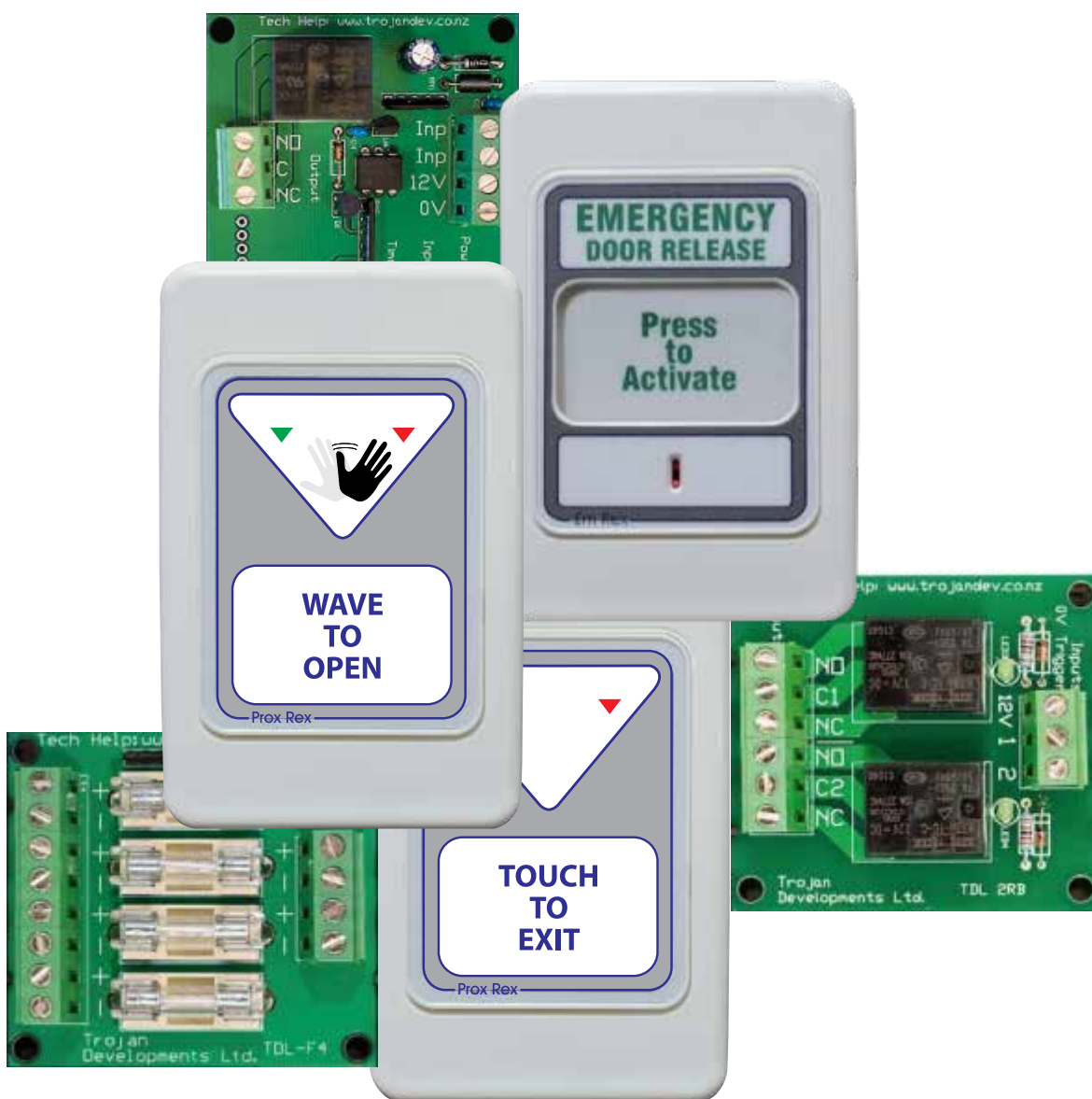


Exit Devices, Relays & Timers



CONTENTS

TROJAN DEVELOPMENTS

table of contents

+64-9-525-7035 ▼ www.trojandev.co.nz ▼ sales@trojandev.co.nz

developing innovative access control solutions since 1987

about trojan developements

Introduction:

- ▼ Trojan Developments Ltd. design's and manufacture's a range of electronic security devices to operate in conjunction with Access Control Systems. Founded in 1987 Trojan Developments has been involved in the electronic security industry for over 20 years and identified a need to provide the security industry more professional looking, reliable and easy to operate egress solutions.
- ▼ In the South Pacific, Trojan Developments supplies 90% of the security industry with egress devices such as the PROX-REX® (Touch to Exit unit) and the EM-REX® (Emergency Break Glass unit), which have become the industry standard. We also manufacture a range of Relay, Fuse and Timer's, which are of a unique design to make the installation of Access Control Systems a lot simpler and quicker than using conventional PCB's.
- ▼ Our strong practical grounding in mechanical and design engineering combined with more than two decades in the security industry has enabled us to consider practical implications up front and produce a range of must have visually sophisticated products that are functional, practical, reliable and quick & easy to install.
- ▼ We are committed to manufacturing innovative, quality products for the Access Control System market. We are always updating our existing products and bringing new products to the market through our network of distributors.

touchless request to exit device for use with access control systems

The PROX-REX-WTO (Wave to Open) electronic switch is a low cost, touch-less switch unit designed for use with Access Control Systems and is an ideal replacement for conventional push buttons, door release buttons, call switches, etc.

Features:

- ▼ Requires only the “wave” of a hand to activate, making it perfect for fast and easy egress, and an advantage for the elderly and disabled.
- ▼ Can be used for a number of applications
- ▼ Vandal-Resistant – all components are behind the plate
- ▼ Perfect replacement for door release buttons that are in high usage areas.
- ▼ No moving parts
- ▼ Ideal for areas where infection control is important, easy clean and fade resistant
- ▼ Two LED indicators provide visual confirmation for heartbeat (RED) and operated (Green)
- ▼ Built-in sounder to provide audible confirmation of operation



Specifications:

- ▼ Single gang profile fits standard electrical flush box
- ▼ Power requirements 9 to 16VDC - 50mA at 13.6 VDC
- ▼ Clean NO and NC output
- ▼ The contacts are rated at 1 AMP DC
- ▼ The switch is fully self-calibrating
- ▼ The faceplate will not deteriorate over time and is easily cleaned
- ▼ CE Certified

Order Options:

- ▼ PROX-REX/WTO

+64-9-525-7035 ▼ www.trojandev.co.nz ▼ sales@trojandev.co.nz

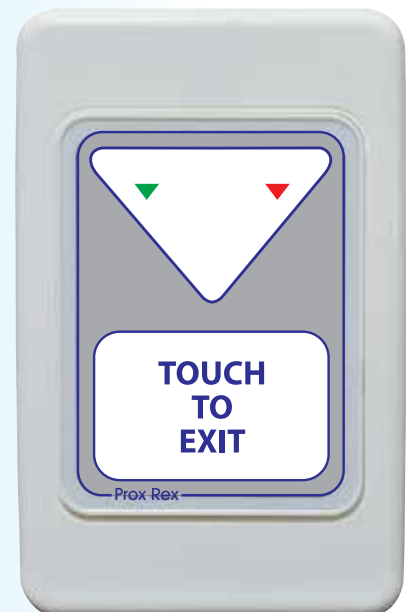
developing innovative access control solutions since 1987

touch-to-exit request to exit device for use with access control systems

The PROX-REX® (Touch to Exit) electronic switch is a low cost, touch sensitive switch unit designed for use with Access Control Systems and is an ideal replacement for conventional push buttons, door release buttons, call switches, etc.

Features:

- ▼ Requires only the lightest touch to activate, making it perfect for fast and easy egress, and an advantage for the elderly and disabled.
- ▼ Can be used for a number of applications
- ▼ Vandal-Resistant – all components are behind the plate
- ▼ Perfect replacement for door release buttons that are in high usage areas.
- ▼ No moving parts
- ▼ Ideal for areas where infection control is important, easy clean and fade resistant
- ▼ Two LED indicators provide visual confirmation for heartbeat (RED) and operated (Green)
- ▼ Built-in sounder to provide audible confirmation of operation



Specifications:

- ▼ Single gang profile fits standard electrical flush box
- ▼ Power requirements 9 to 16VDC - 50mA at 13.6 VDC
- ▼ Clean NO and NC output
- ▼ The contacts are rated at 1 AMP DC
- ▼ The switch is fully self-calibrating
- ▼ The faceplate will not deteriorate over time and is easily cleaned
- ▼ CE Certified

Order Options:

- ▼ PROX-REX/TTE

+64-9-525-7035 ▼ www.trojandev.co.nz ▼ sales@trojandev.co.nz

developing innovative access control solutions since 1987

emergency exit device for use with access control systems


The EM-REX® (Emergency Exit Device) is an emergency door release unit, which can be used on its own or in conjunction with the PROX-REX® units, to make up a total access controlled exit solution.

Features:

- ▼ Field resettable unit, a reset tool is supplied with every unit
- ▼ No breaking of glass to operate
- ▼ Two outputs; one set to break lock power and one set for status monitoring
- ▼ Visual confirmation of activation
- ▼ Audible conformation of activation
- ▼ Ancillary input for remote operation of sounder
- ▼ Minimal moving parts
- ▼ Complies with local codes for emergency egress



Specifications:

- ▼ Single gang profile fits standard electrical flush box
- ▼ Power requirements 9 to 16VDC (only if using on board sounder)
- ▼ 10mA at 13.6 VDC
- ▼ Clean NO and NC output
- ▼ The contacts are rated at 1 AMP DC
- ▼ The faceplate will not deteriorate over time and is easily cleaned.
- ▼  Certified & complies with BS 5839 Pt 2. Standard for "Break-Glass Panels"

Order Options:

- ▼ EM-REX

+64-9-525-7035 ▼ www.trojandev.co.nz ▼ sales@trojandev.co.nz

developing innovative access control solutions since 1987

EM-COVER

TROJAN DEVELOPMENTS

cover for use with emergency exit device - monitored

The EM-COVER is for use with the EM-REX® unit to deter unintended or malicious activation of the unit when it is installed in a public area. The monitored version has two outputs, which can be used to monitor the operation of the cover.

Features:

- ▼ Designed to complement the Em Rex unit and comply with local codes for emergency egress
- ▼ Two outputs; one set for local audible indication and one set for status monitoring
- ▼ The EM-COVER is secured behind the EM-REX® unit to prevent removal
- ▼ The cover is designed to latch closed so as to make the operation of it a deliberate action
- ▼ The cover is made of polycarbonate so as to withstand long term operation without any deterioration.
- ▼ Weather resistant for external use
- ▼ Minimal moving parts
- ▼ Text and graphics will not deteriorate over time and the unit is easily cleaned



Specifications:

- ▼ Overall dimensions; 92mm (w) x 153mm (h) and fits a single gang electrical flush box
- ▼ Switching voltage max is 30VDC, 200mA
- ▼ Output for connection to the EM-REX® for audible indication
- ▼ N/C output for status monitoring (opens on activation)
- ▼ Patent Pending

Order Options:

- ▼ EM-COVER/MON
- ▼ EM-COVER/NMN (non monitored version)

+64-9-525-7035 ▼ www.trojandev.co.nz ▼ sales@trojandev.co.nz

developing innovative access control solutions since 1987

TDL-1RB

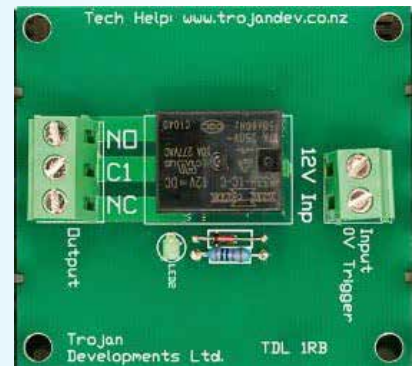
TROJAN DEVELOPMENTS

single relay board SPST

The TDL-1RB is an 8 Amp Relay Board. It has 1 x 12VDC input that switches a single pole double throw relay. The board is designed to fit the TDL Mounting Base, which makes installation very easy and tidy with all cables run behind the PCB with a cover that has an area for labeling. The TDL-1RB can be connected together with other boards to make up a complete system of relays, fuses, timers etc...

Features:

- ▼ Contact rated at 8 Amps AC/DC
- ▼ Fits TDL-MB mounting system
- ▼ Modular unit that can be used to switch a number of devices
- ▼ Designed to be used as an interface between a low current switching control board and a high powered lock
- ▼ LED to indicate relay status
- ▼ Raising clamp type terminals will not damage cables and can accommodate up to a 2.5mm² (14AWG) cable



Specifications:

- ▼ Single way Relay Board
- ▼ Operating Voltage 9 to 16VDC - 38mA at 13.6 VDC
- ▼ 12VDC negative trigger input
- ▼ Single Pole Double Throw relay
- ▼ Contacts rated at 8 Amps AC/DC
- ▼ Dimensions: 55mm (w) x 60mm (h) x 23mm (d)

Order Options:

- ▼ TDL-1RB

+64-9-525-7035 ▼ www.trojandev.co.nz ▼ sales@trojandev.co.nz

developing innovative access control solutions since 1987

TDL-2RB

TROJAN DEVELOPMENTS

two way relay board SPST

The TDL-2RB is a 2 way 8 Amp Relay Board. It has 2 x 12VDC inputs that can switch 2 separate single pole double throw relays. The board is designed to fit the TDL Mounting Base, which makes installation very easy and tidy with all cables run behind the PCB with a cover that has an area for labeling. The TDL-2RB can be connected together with other boards to make up a complete system of relays, fuses, timers etc...

Features:

- ▼ Contacts rated at 8 Amps AC/DC
- ▼ Fits TDL-MB mounting system
- ▼ Modular unit that can be used to switch a number of devices
- ▼ Designed to be used as an interface between a low current switching control board and a high powered lock
- ▼ LED to indicate relay status
- ▼ Raising clamp type terminals will not damage cables and can accommodate up to a 2.5mm² (14AWG) cable



Specifications:

- ▼ Two way Relay Board
- ▼ Operating Voltage 9 to 16VDC - 38mA at 13.6 VDC per relay
- ▼ 12VDC negative trigger input
- ▼ Two Single Pole Double Throw relays
- ▼ Contacts rated at 8 Amps AC/DC
- ▼ Dimensions: 55mm (w) x 60mm (h) x 23mm (d)

Order Options:

- ▼ TDL-2RB

+64-9-525-7035 ▼ www.trojandev.co.nz ▼ sales@trojandev.co.nz

developing innovative access control solutions since 1987

TDL-4RB

TROJAN DEVELOPMENTS

four way relay board SPST

The TDL-4RB is a 4 Way 8 Amp Relay Board. It has 4 x 12VDC inputs that can switch 4 separate 8 Amp single pole double throw relays. The board is designed to fit the TDL Mounting Base, which makes installation very easy and tidy with all cables run behind the PCB with a cover that has an area for labeling. The TDL-4RB can be connected together with other boards to make up a complete system of relays, fuses, timers etc...

Features:

- ▼ Contacts rated at 8 Amps AC/DC
- ▼ Fits TDL-MB mounting system
- ▼ Modular unit that can be used to switch a number of devices
- ▼ Designed to be used as an interface between a low current switching control board and a high powered lock
- ▼ LED to indicate relay status
- ▼ Raising clamp type terminals will not damage cables and can accommodate up to a 2.5mm² (14AWG) cable status



Specifications:

- ▼ Four way Relay Board
- ▼ Operating Voltage 9 to 16VDC - 38mA at 13.6 VDC per relay
- ▼ 12VDC negative trigger input
- ▼ Four Single Pole Double Throw relays
- ▼ Contacts rated at 8 Amps AC/DC
- ▼ Dimensions: 110mm (w) x 60mm (h) x 23mm (d)

Order Options:

- ▼ TDL-4RB

+64-9-525-7035 ▼ www.trojandev.co.nz ▼ sales@trojandev.co.nz

developing innovative access control solutions since 1987

TDL-4FB

TROJAN DEVELOPMENTS

four way fuse board

The TDL-4FB is a 4 Way Fuse Board. It has 4 individual fused outputs. Each fuse has an associated LED to indicate that the fuse is operative. The LED illuminates green for normal positive 12VDC operation and amber for AC voltages up to 24VAC. The board is designed to fit the TDL Mounting Base, which makes installation very easy and tidy with all cables run behind the PCB with a cover that has an area for labeling. The TDL-4FB can be connected together with other boards to make up a complete system of relays, fuses, timers etc...

Features:

- ▼ 4 separate fused outputs
- ▼ The fuses are field replaceable
- ▼ Maximum fuse rating 5 Amps
- ▼ Fits TDL-MB mounting system
- ▼ Modular unit that can be used to protect a number of devices
- ▼ Raising clamp type terminals will not damage cables and can accommodate up to a 2.5mm² (14AWG) cable status
- ▼ Designed to be used as an interface between power supplies and field devices
- ▼ LED's to indicate fuse status
- ▼ Can be used for the protection of 24VAC cameras



Specifications:

- ▼ 4-Way Fuse Board
- ▼ Fuse size: 20mm x 5mm
- ▼ Terminals for positive and negative outputs - the positive outputs are fused
- ▼ Suitable for AC and DC power supplies
- ▼ Maximum supply current per 4-way fuse board is 20 Amps
- ▼ Maximum output current is 5 Amps
- ▼ Dimensions: 55mm (w) x 60mm (h) x 23mm (d)

Order Options:

- ▼ TDL-4FB

+64-9-525-7035 ▼ www.trojandev.co.nz ▼ sales@trojandev.co.nz

developing innovative access control solutions since 1987

TDL-8FB

TROJAN DEVELOPMENTS

eight way fuse board

The TDL-8FB is an 8 Way Fuse Board. It has 8 individual fused outputs. Each fuse has an associated LED to indicate that the fuse is operative. The LED illuminates green for normal positive 12VDC operation and amber for AC voltages up to 24VAC. The board is designed to fit the TDL Mounting Base, which makes installation very easy and tidy with all cables run behind the PCB with a cover that has an area for labeling. The TDL-1RB can be connected together with other boards to make up a complete system of relays, fuses, timers etc...

Features:

- ▼ 8 separate fused outputs
- ▼ The fuses are field replaceable
- ▼ Maximum fuse rating 5 Amps
- ▼ Fits TDL-MB mounting system
- ▼ Modular unit that can be used to protect a number of devices
- ▼ Raising clamp type terminals will not damage cables and can accommodate up to a 2.5mm² (14AWG) cable
- ▼ Designed to be used as an interface between power supplies and field devices
- ▼ LED's to indicate fuse status
- ▼ Can be used for the protection of 24VAC cameras



Specifications:

- ▼ 8-Way Fuse Board
- ▼ Fuse size: 20mm x 5mm
- ▼ Terminals for positive and negative outputs - the positive outputs are fused
- ▼ Suitable for AC and DC power supplies
- ▼ Maximum supply current per 4-way fuse board is 20 Amps (40 Amps Total)
- ▼ Maximum output current is 5 Amps
- ▼ Dimensions: 110mm (w) x 60mm (h) x 23mm (d)

Order Options:

- ▼ TDL-8FB

+64-9-525-7035 ▼ www.trojandev.co.nz ▼ sales@trojandev.co.nz

developing innovative access control solutions since 1987

TDL-4RFB

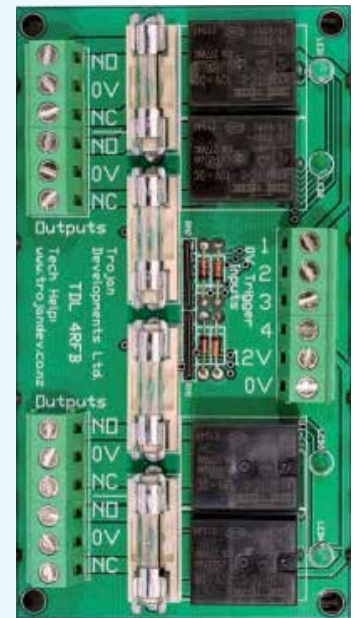
TROJAN DEVELOPMENTS

four way fused relay board

The TDL-4RFB is a combination relay and fuse board. It is a compact unit designed for Access Control Systems that do not have on-board relay outputs and that do not have space for separate relay and fuse boards (Casi 8RP for example). The board is designed to fit the TDL Mounting Base, which makes installation very easy and tidy with all cables run behind the PCB with a cover that has an area for labeling. The TDL-4RFB can be connected together with other boards to make up a complete system of relays, fuses, timers etc...

Features:

- ▼ Designed to switch lock power with all required fuses and links pre-made on the board saving costs in components and time as there is no requirement for inter-board cabling and the associated labour
- ▼ Compact size which allows for installation within the same enclosure as the Access Control System
- ▼ Fuses are field replaceable
- ▼ Raising clamp type terminals will not damage cables and can accommodate up to a 2.5mm² (14AWG) cable
- ▼ Designed to be used as an interface between a low current switching control board and a high powered lock
- ▼ LED's to indicate both relay and fuse status
- ▼ Includes the TDL MB mounting system



Specifications:

- ▼ Four-Way Relay & Fuse Board
- ▼ Fuse size: 20mm x 5mm
- ▼ Terminals for 12VDC lock power supply
- ▼ Four negative trigger inputs for relays
- ▼ Operating Voltage 9 to 16VDC - 38mA at 13.6 VDC per relay
- ▼ Each output consists of a negative 0V common, switched 12V NO or NC contact
- ▼ Dimensions: 110mm (w) x 60mm (h) x 23mm (d)
- ▼ Maximum supply current per board is 20 Amps
- ▼ Contacts rated at 5 Amps each
- ▼ Quality rising clamp terminals (maximum cable size 2.5mm²)
- ▼ Compatible with the TDL Mounting Base

Order Options:

- ▼ TDL-4RFB

+64-9-525-7035 ▼ www.trojandev.co.nz ▼ sales@trojandev.co.nz

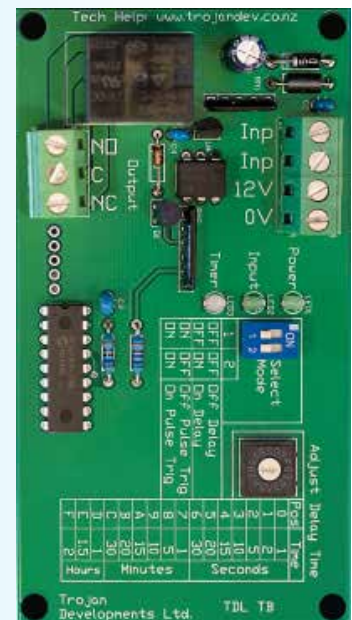
developing innovative access control solutions since 1987

timer board

The TDL-TB is a multifunction timer board. It a field selectable definitive time duration to operate from 0.5 seconds up to 2 Hours. It is extremely versatile with 4 input modes (Off Delay, On Delay, Off Pulse & On Pulse) allowing endless application possibilities. The board is designed to fit the TDL Mounting Base, which makes installation very easy and tidy with all cables run behind the PCB with a cover that has an area for labeling. The TDL-TB can be connected together with other boards to make up a complete system of relays, fuses, timers etc...

Features:

- ▼ Off Delay (loss of 0VDC on the input gives an OFF delay on the output)
- ▼ On Delay (gain of 0VDC on the input gives ON delay on the output)
- ▼ Off Pulse Trigger (the 0VDC input is lost for a moment which gives an OFF delay on the output)
- ▼ On Pulse Trigger (the 0VDC input is lost for a moment which gives an ON delay on the output)-MB mounting system
- ▼ Time duration is easily set via the rotary dip switch, as listed on the board
- ▼ Raising clamp type terminals will not damage cables and can accommodate up to a 2.5mm² (14AWG) cable
- ▼ Set time will not drift as the components age or the temperature fluctuates
- ▼ On board LEDs indicate that the board has power, that the input has been operated, that the timer is counting down and that the output is triggered
- ▼ Fits TDL-MB mounting system which is included



Specifications:

- ▼ 0.5 Second to 2 Hour selectable
- ▼ Operating Voltage 9 to 16VDC - 17mA at 13.6 VDC standby and 57mA energised
- ▼ Input terminals for a switched contact or a negative trigger
- ▼ Single Pole Double Throw relay output
- ▼ Contacts rated at 8 Amps AC/DC
- ▼ Dimensions: 110mm (w) x 60mm (h) x 23mm (d)

Order Options:

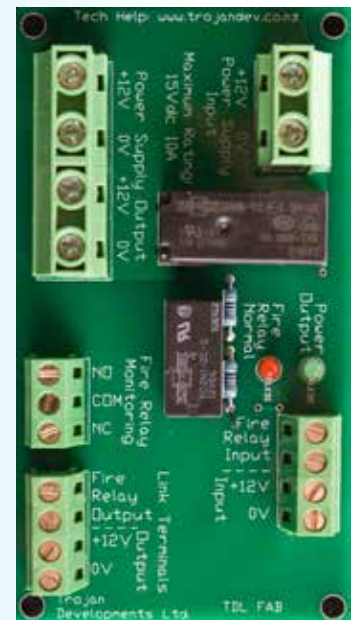
- ▼ TDL-TB

fire alarm interface board

The TDL-FAB is a Fire Alarm Interface board, which allows for the control of the power to the Access Control system via an input from the Fire Alarm system so as to drop power from the Access Control doors upon fire alarm activation. The board is designed to fit the TDL Mounting Base, which makes installation very easy and tidy with all cables run behind the PCB with a cover that has an area for labeling. The TDL-FAB can also be daisy chained to other FAB's so as to only require one Fire Alarm input for multiple power supplies installations.

Features:

- ▼ Accepts normally closed, clean input from fire alarm system
- ▼ Isolated Lock Power input with two Lock Power outputs
- ▼ Control Output to allow daisy chaining of multiple TDL-FAB's from a single fire alarm system.
- ▼ Control Output provides power for subsequent TDL-FAB's ensuring synchronization of all TDL-FAB's (single power source for all TDL-FAB's)
- ▼ On board LEDs indicate the status of the fire alarm system input & the Lock Power output
- ▼ Single Pole Double Throw relay output for fire alarm status monitoring
- ▼ Raising clamp type terminals will not damage cables and can accommodate up to two 2.5mm² (14AWG) cables on the power control side & one 2.5mm² (14AWG) cable on the control side
- ▼ Includes the TDL MB mounting system



Specifications:

- ▼ Operating Voltage 9 to 16VDC - 70mA at 13.6 VDC
- ▼ Control Contacts rated at 15Amp's AC/DC
- ▼ Status Contacts rated at 8 Amps AC/DC
- ▼ Dimensions: 110mm (w) x 60mm (h) x 23mm (d)

Order Options:

- ▼ TDL-FAB

+64-9-525-7035 ▼ www.trojandev.co.nz ▼ sales@trojandev.co.nz

developing innovative access control solutions since 1987

mounting base

The TDL-MB is a universal Mounting Base for all TDL Relay, Fuse & Timer Boards. It makes installation quick, easy and tidy. Multiple TDL-MB's can be connected together to make up a complete system of relays, fuses, timers etc...

The TDL-MB acts as a cable trunking system to conceal all of the input and output cables and makes installation and labeling of the inputs and outputs easy.

Features:

- ▼ Removable cable covers
- ▼ Removable label holders
- ▼ Reduced installation time (labour saving)
- ▼ High adhesion double-sided tape applied at factory
- ▼ Heat Resistant ABS plastic construction
- ▼ Easy to label your devices, inputs and outputs



Specifications:

- ▼ Dimensions: 110mm (w) x 85mm (h) x 33mm (d)
- ▼ Patent Pending

Order Options:

- ▼ TDL-MB

+64-9-525-7035 ▼ www.trojandev.co.nz ▼ sales@trojandev.co.nz

developing innovative access control solutions since 1987

TROJAN DEVELOPMENTS

about trojan developments

About:

- ▼ Trojan Developments Ltd design and manufacture a range of electronic security devices to operate in conjunction with Access Control Systems. Founded in 1987 Trojan Developments Ltd has been involved in the electronic security industry for over 20 years and identified a need to give the industry more professional looking egress solutions.

In the South Pacific, Trojan Developments supplies 90% of the security industry with our egress devices such as the Prox Rex (Touch to Exit unit) and the Em Rex (Emergency Break Glass unit), which has become the industry standard. We also have a range of Relay, Fuse and Timer units, which are of a unique design to make the installation of Access Control Systems a lot simpler and quicker than using conventional PCB type units.

Trojan Developments Ltd also exports to other countries and see this market increasing over the next few years.

We are always updating our existing products to bring new products to the market through our network of distributors.

Patent Pending: EM-COVER & TDL-MB

"ROX-REX", "Prox-Rex", "PROX REX", "Prox Rex", "EM-REX", "Em-Rex", "EM REX" and "Em Rex" are Registered Trade Mark's of Trojan Developments Ltd.

Proudly New Zealand Made:

Trojan Developments Ltd.
PO Box 25-552, St Heliers, Auckland 1740, New Zealand



+64-9-525-7035 ▼ www.trojandev.co.nz ▼ sales@trojandev.co.nz

developing innovative access control solutions since 1987